



# Beaufort County Public Works Stormwater Infrastructure Project Summary

**Project Summary:** Penn Center Road Outfall

**Activity:** Routine/Preventive Maintenance

**Narrative Description of Project:**

Project improved 2,670 L.F. of drainage system. Cleaned out 2,670 L.F. of outfall ditch. Jetted (1) access pipe and (2) crossline pipes.

**Completion:** Nov-12

<b>2013-571 / Penn Center Outfall</b>	<b>Labor Hours</b>	<b>Labor Cost</b>	<b>Equipment Cost</b>	<b>Material Cost</b>	<b>Contractor Cost</b>	<b>Indirect Labor</b>	<b>Total Cost</b>
AUDIT / Audit Project	1.0	\$20.89	\$0.00	\$0.00	\$0.00	\$13.23	\$34.12
CLPJT / Crossline Pipe - Jetted	30.0	\$655.35	\$332.40	\$175.48	\$0.00	\$247.05	\$1,410.28
DLO / Ditch Layout	27.0	\$633.76	\$40.20	\$15.01	\$0.00	\$433.60	\$1,122.57
HAUL / Hauling	41.0	\$907.25	\$406.60	\$194.02	\$0.00	\$591.60	\$2,099.47
ODCO / Outfall ditch - cleaned out	109.0	\$2,561.02	\$1,060.15	\$340.40	\$0.00	\$1,630.52	\$5,592.08
WVEH / Washing Vehicles	17.0	\$399.60	\$89.38	\$60.52	\$0.00	\$273.74	\$823.24
<b>2013-571 / Penn Center Outfall</b>	<b>225.0</b>	<b>\$5,177.87</b>	<b>\$1,928.73</b>	<b>\$785.43</b>	<b>\$0.00</b>	<b>\$3,189.74</b>	<b>\$11,081.76</b>
<b>Grand Total</b>	<b>225.0</b>	<b>\$5,177.87</b>	<b>\$1,928.73</b>	<b>\$785.43</b>	<b>\$0.00</b>	<b>\$3,189.74</b>	<b>\$11,081.76</b>

Before



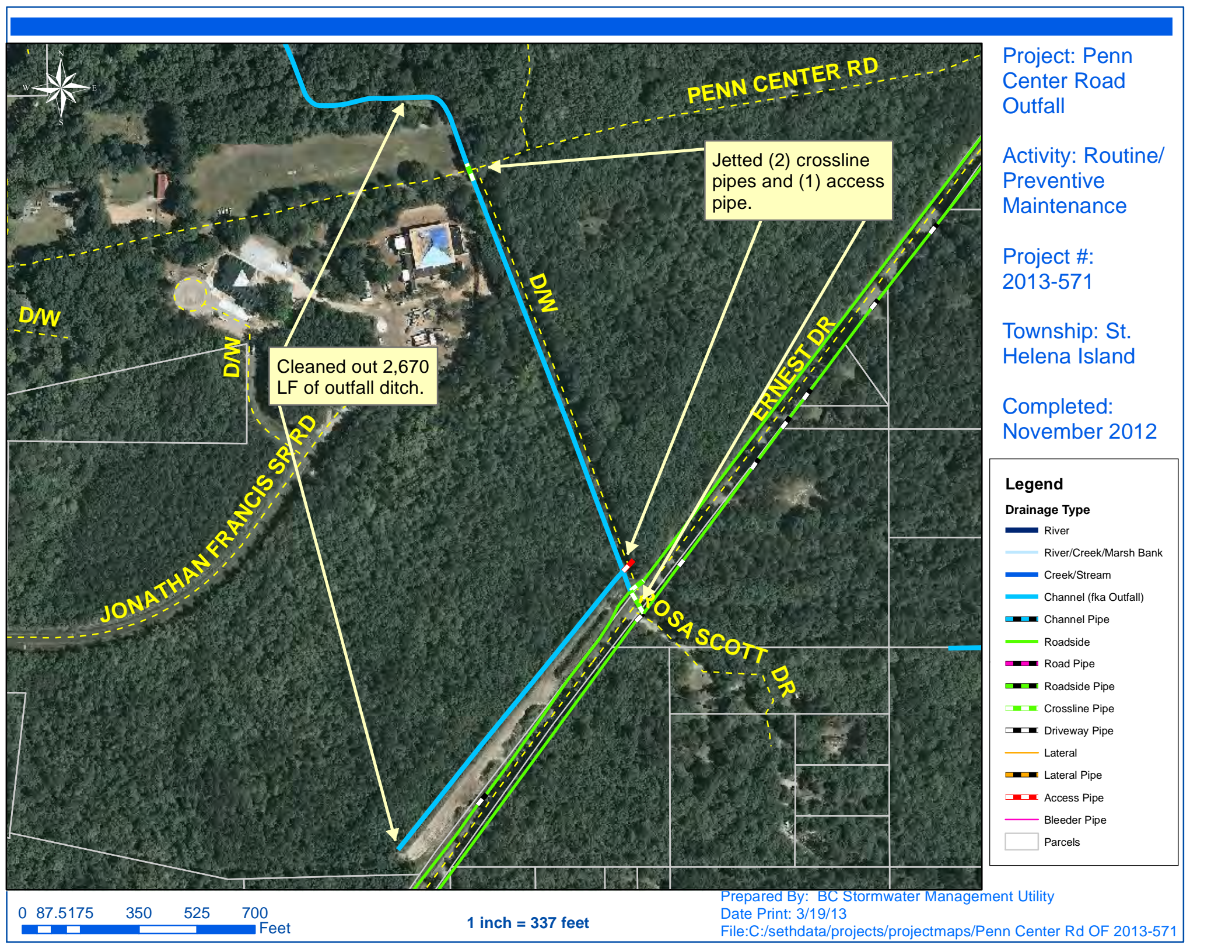
During



After







Project: Penn  
Center Road  
Outfall

Activity: Routine/  
Preventive  
Maintenance

Project #:  
2013-571

Township: St.  
Helena Island

Completed:  
November 2012

### Legend

#### Drainage Type

- River
- River/Creek/Marsh Bank
- Creek/Stream
- Channel (fka Outfall)
- Channel Pipe
- Roadside
- Road Pipe
- Roadside Pipe
- Crossline Pipe
- Driveway Pipe
- Lateral
- Lateral Pipe
- Access Pipe
- Bleeder Pipe
- Parcels

0 87.5175 350 525 700  
Feet

1 inch = 337 feet

Prepared By: BC Stormwater Management Utility  
Date Print: 3/19/13  
File: C:\sethdata\projects\projectmaps\Penn Center Rd OF 2013-571